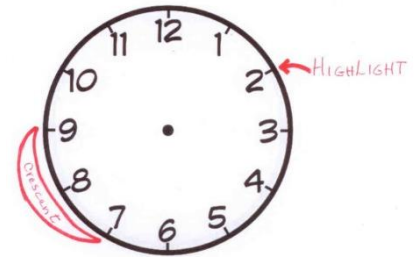
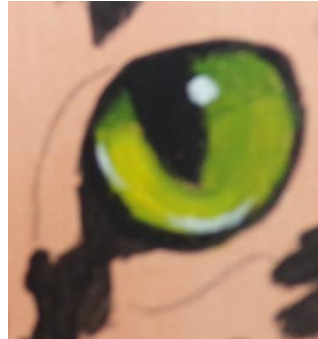
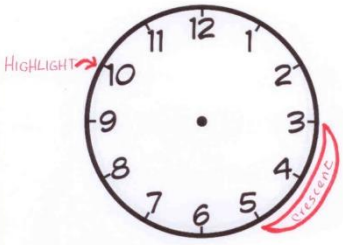




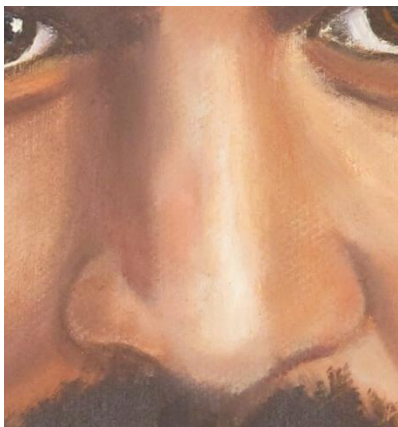
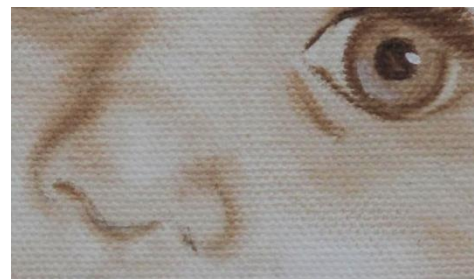
EYES Think of the eye as a face of a clock. You will put the highlight at either 2 o'clock or 10 o'clock, on the line between the iris and the pupil. You will put a crescent of light opposite the highlight. Between 7 and 9 if you H/L at 2:00 Or between 3 and 5, if you H/L at 10:00. This goes for human and animal eyes.



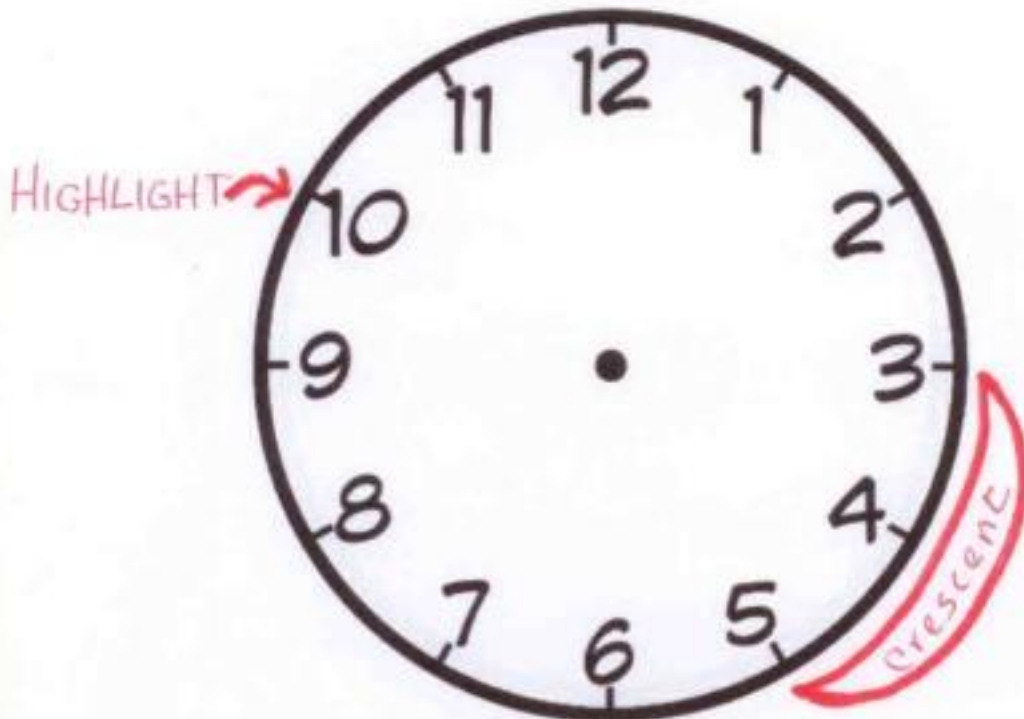
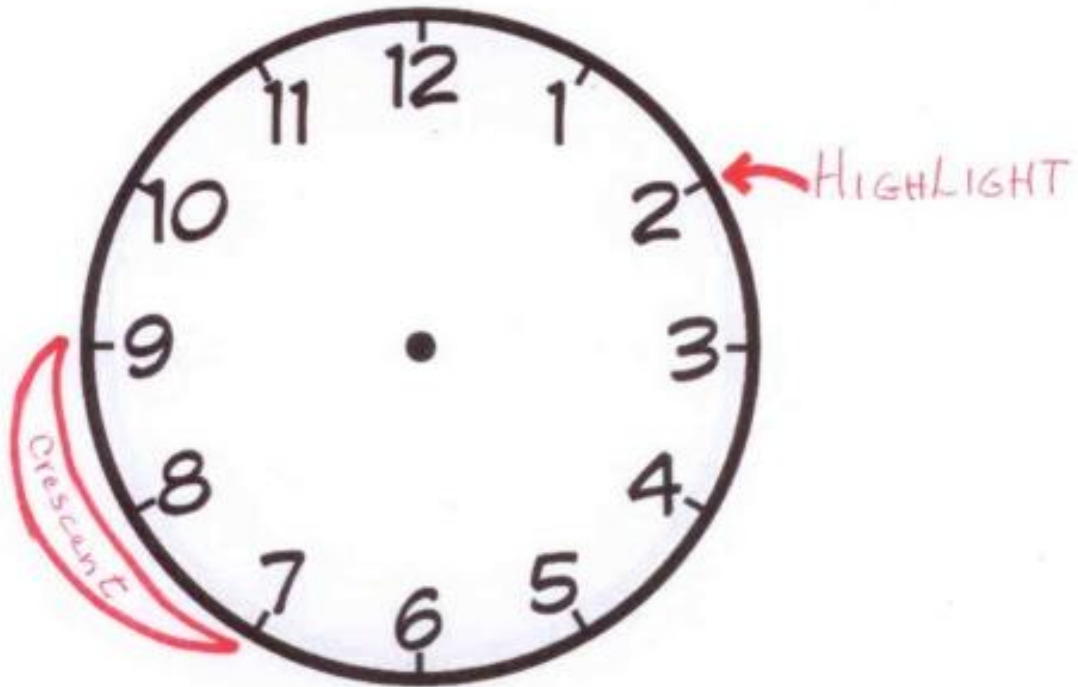
NOSES Make sure you get the shape of the nose correct, as it won't look like your subject if it is different. To make the nose jut out from the face, make sure the top plane of the nose is highlighted and the bottom of the nose is shadowed. Again, this goes for human and animal noses.



Baby's noses are much flatter across the bridge (between the eyes) and more turned up (Pug noses).



Highlight the Eyes at either 2:00 O'Clock or 10:00 O'Clock



Eyes & Noses is an excerpt from Kathie Camara's "Paint Your Pet in Oil" manual
For a full copy of the E-Book, contact Kathie Camara
butterflykissesstudio@yahoo.com www.ButterflyKissesStudio.com